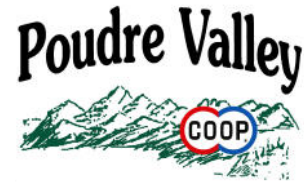


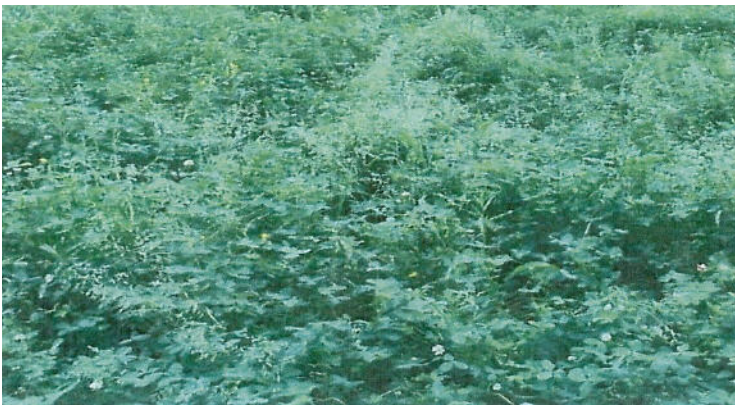
# Frosty Clover



225 NW Frontage Rd  
Ft. Collins, CO 80524  
888-603-7333 or 970-419-3309

## *What is Frosty?*

**Frosty** represents a huge breakthrough in cold tolerance for clover. Historically the usage of clover has been extremely limited due to its frost intolerance. **Frosty has been documented to survive cold temperatures down to 5 degrees Fahrenheit!!**



*Seeding rate: Irrigated 8-10 lbs per acre - Dryland 5 lbs per acre*

We obtained the following results at our research farm:

Planted 4/21/15 first cutting July 18th

	DM yield/A
Frosty Clover	6,245
75% Alfalfa/25% Frosty Clover	3,903
Bullseye Alfalfa	3,123

## *How can it be used?*

### **Hay Plantings**

If your used to spring planting, by fall planting instead of spring you will be able to get at least an additional forage cutting.

In the north you can plant up to a month earlier than traditional clovers. As **Frosty** greatly resembles alfalfa in appearance and quality, you can utilize **Frosty** to seed into winter killed areas in your alfalfa hay fields or fill in declining stands. You can also utilize **Frosty** clover as a nurse crop for spring plantings. **Research has shown that by adding 5 lbs. of Frosty clover to your spring alfalfa seeding you can observe an increase in yield and quality of up to 25%!**

**Frosty clover** has been shown to not cause bloat when directly grazed. Provides crude protein levels as high as 22.1% and has relative feed values up to 182.